

JAL-AMB SERIES AMBER AREA LUMINAIRE



PRODUCT DESCRIPTION

The **JAL-AMB AMBER LED AREA LIGHTS** are designed to minimize the ecological impact that traditional lighting can have on turtles and wildlife, especially near oceans and beaches. To protect our wildlife, standards have been put in place for lighting fixtures approved for Turtle breeding areas. Our Amber LED Area Lights meet these standards.

Our area architectural luminaires are designed to illuminate parking areas, roads, building facades, loading docks and a variety of other general lighting applications near oceanfront properties. The multiple mounting options make it a versatile luminaire for pole-mounted area lighting, wall lighting and other exterior lighting requirements. The JAL Amber Area Light series can be used with an intelligent programmable control in a traditional easy to use twist lock photocell.

Standard features include 1-10VDC, ten second stray light or lighting delay, 20kV surge protection and a programmable dusk and dawn level on/off setting.

Optional features include IP65 aluminum enclosure with multiple color choices, 347VAC/277-480VAC operation and programable control for nighttime dimmed operation and lifetime illumination decay adjustments.

Programmed operation includes constant operation illumination level, turn off response time delay, nighttime dimmed operation, nighttime dimmed time and lifetime illumination decay compensation up to 5 Yrs.

FEATURES

- Bronze Aluminum Alloy Housing
- Weatherproof IP65 Rated
- Output constant current level adjusted through output cable with 1-10VDC
- Universal Mounting Bracket - Four Mounting Options in One: Slip Fitter, Wall Bracket, Round or Square Pole Mount
- 20kV Surge Protection Standard

PHOTOCELL FEATURES

- Traditional Form Factor 3 / 7 pin ANSI C136.41.2013 Receptacle and Twist Lock Photocell Optional
- Programmable for Multiple Illumination & Response Time Settings
- 100-277VAC, 120-347VAC and 277-480VAC Options
- 20kV Surge Protection Standard
- UV Stabilized Polycarbonate & Powder Coat Aluminum Enclosure Options
- 1-10VDC Dimming Standard

PERFORMANCE SUMMARY

Input Wattage	100W / 150W / 200W
Efficacy	90 to 100 lm/W on Average
Input Voltage	100-277VAC / 277-480VAC
CCT	1600K
IES Optic Type Options for DLC	Type III
CRI	>70 Standard
Power Factor	≥0.9
Ambient Working Temp.	-40°C to 50°C (-40°F to 122°F)
Ingress Protection (IP)	IP65
Effective Projected Area	.85sq. ft. - 100/150W 1.0sq. ft. - 200 / 240 / 300W
Dimming & Controls	1-10VDC Dimming Type (Receptacle for NEMA ANSI C136.41 3 or 7-Pin Socket and Twist Lock Dusk-to-Dawn Photocell are optional)
Construction	Cast Aluminum Alloy / Epoxy Powder Coat Finish Polycarbonate Lens
Lifetime Based on TM21	L70 @ ≥ 143,000 hrs L80 @ ≥ 122,000 hrs L90 @ ≥ 73,000 hrs
Certifications & Compliance	UL Listed
Limited Warranty	5 Yrs

APPLICATIONS

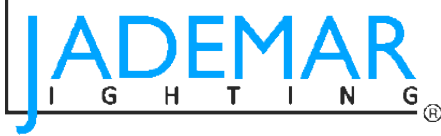
- Ocean Front Commercial and Industrial Area Lighting
- High Mounting Heights Wall Application
- Ocean Front Condominiums
- Piers

CERTIFICATIONS



Information contained herein is subject to change without notice.
Values are nominal. All values conform to DLC tolerances.
Revised 08/2022





SPECIFICATION SUBMITTAL DETAIL

Project Name/Type:		Date:
Catalog/Part #:		

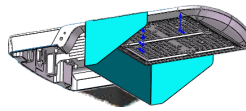
JAL AMBER AREA LIGHT SERIES

ORDERING INFORMATION / Example: **JAL-AMB-150W-H-16K-T3-JICS-BT-SC-UB-BZ**

Product Series	Input Voltage	CCT	CRI	Light Distribution	Surge Protection	Control Options	Mounting Options	Finish
JAL-AMB-100W JAL-AMB-150W JAL-AMB-200W	Blank (120-277V) Standard H (200-480VAC) 150W only	16K (1600K)	Blank (70 CRI) Standard	T3 (Type III)	Blank (20kV Surge Protection) Standard	PC3 (3-Pin 120-277V Photocell) PC3-H (3-Pin 480V Photocell) IPC7 (7-Pin Intelligent Photocell) PCR-3 (3-Pin Photocell Receptable) PCR-5 (5-Pin Photocell Receptable) PCR-7 (7-Pin Photocell Receptable) BMW0 (Microwave Bi-level Motion Sensor) JICS-BT-SC (Bluetooth Fixture Controller)	UB (Universal Bracket) Standard	BZ (Bronze) Standard CC (Custom Color) <i>Special Order</i> <i>Replace the "CC" with your custom RAL color</i>

FIELD INSTALLED OPTIONS

JAL-SBF-G2-100-150W	House side shield (Back/Front) for the 100W & 150W Models
JAL-SBF-G2-200-300W	House side shield (Back/Front) for the 200W & 300W Models
JAL-SRL-G2-100-150W	House side shield (Right/Left) for the 100W & 150W Models
JAL-SRL-G2-200-300W	House side shield (Right/Left) for the 200W & 300W Models
JAL-TR-G2	Two-Piece Swivel Bracket / Trunnion Mount

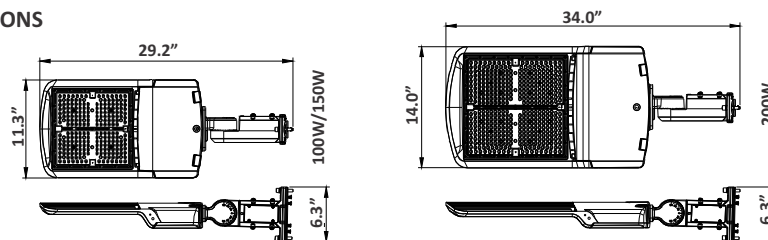


JAL-MS-RC	Hand held remote control for JAL-MS
PC3	3 Pin NEMA Type Photocell
PC3-H	3 Pin NEMA Type Photocell 480V
IPC7	7 Pin Intelligent Photocell step dimming feature
PC3-SC	Shorting Cap

ELECTRICAL AND PERFORMANCE DATA

Model Number	JAL-AMB-100W	JAL-AMB-150W	JAL-AMB-200W
Input Power	100W	150W	200W
Lumen Output	9000-10000LM	13500-15000LM	18000-20000LM
Lumen Efficacy	90-100 LM/W		
Color Temperature (CCT)	1600K		
CRI	>70		
Light Distribution	152 x 92 Degree (Type III)		
Input Voltage Options	120-277V or 277-480V		
Power Factor	≥0.70		
THD	≤20%		
Optional Controls	7-Pin Receptable / Microwave Bi-level - Step Dimming Motion Sensor / Bluetooth Fixture Controller		
Construction	Aluminum Alloy Bronze or White Finish		
Ingress Protection	IP65		
Ambient Working Temp.	-40°C to 50°C (-40°F to 122°F)		
Operating Humidity	10%-90% RH		
Ingress Protection	IP65		
Construction	Cast Aluminum Alloy / Epoxy Powder Coat Finish		
Mounting	Universal Mounting Bracket: Slip Fitter, Wall Bracket, Round or Square Pole Mount		
Weight	15 lbs.	15 lbs.	20 lbs.
Dimensions (LxWxH)	29.2" x 11.3" x 6.3"	29.2" x 11.3" x 6.3"	34.0" x 14.0" x 6.3"
Warranty	5 Years		

PRODUCT DIMENSIONS



Miami, FL USA - info@jademar.com
T: 305.640.0465 - F: 305.640.0468
WWW.JADEMAR.COM



Information contained herein is subject to change without notice.
Values are nominal. All values conform to DLC tolerances.
Revised 08/2022