

PFL G2 SERIES HIGH WATTAGE FLOODLIGHT



PRODUCT DESCRIPTION

The Jademar **PFL G2 Series Floodlight** is designed for maximum adaptability in a vast range of commercial and industrial applications and rugged service environments.

The PFL G2 series integrates into any indoor or outdoor application with multiple mounting options, optics and 100-277VAC or 347-480VAC. Standard features include 0-10VDC dimming and 6kV surge suppression.

The IP65 housing features epoxy powder coat finish, and a polycarbonate lens cover with an integrated heat sink design that allows for safe operation up to 130°F.

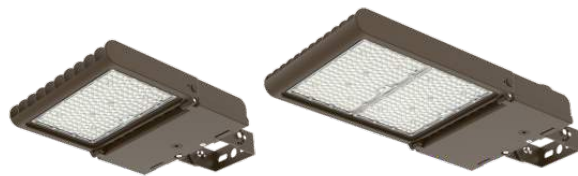
The PFL G2 series housing and mounting system is wind tested to EN60598-2-3 standards.

FEATURES

- Housing: ADC12 Aluminum heat sink and outdoor powder coating
- Optical Lens: High light transmittance PC, anti-UV and flame resistant
- Aluminum LED board: High conductive, waterproof, aging resistance, salt mist resistance, ensure the safety and long lifespan
- LED: LUMILEDS 3030 LED, 135 lm/W on average, CRI>70
- Driver: 100-277V or 347-480VAC, 50/60Hz, PF>0.9, THD<20%
- Operating Temperature: -40°C~+40° C
- Input Voltage: 100-277V AC 50/60Hz
- Optional: Plug-in Sensor (DC12V) Photocell and Motion Sensor are optional
- Lightning Surge Protection: 10kV is standard, 20kV as option
- UL/cUL/FCC/ICES certifications. Suitable for Wet Locations
- Warranty: 5 Year Limited

LIFETIME BASED ON TM21

	PFL-80W	PFL-100W	PFL-150W	PFL-230W	PFL-300W	PFL-400W
L70@	>126,000	>189,000	>155,000	>155,000	>189,000	>155,000
L80@	>81,000	>86,000	>94,000	>95,000	>118,000	>106,000
L90@	>41,000	>56,000	>46,000	>46,000	>56,000	>46,000



Single Module
80W-230W

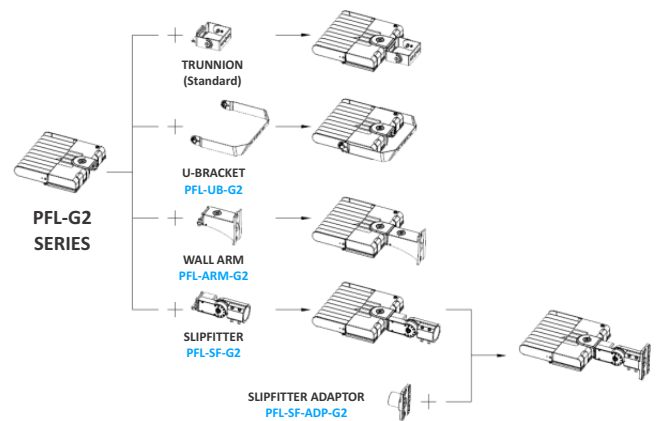
Twin Module
300W-400W

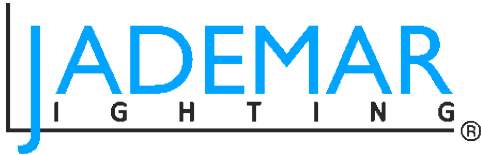


PERFORMANCE SUMMARY

Input Power	80W / 100W / 150W / 230W / 300W / 400W
Efficacy	135 lm/W on average
CCT Options	3000K / 4000K / 5000K / 5700K
Construction	Powder Coat Cast Aluminum Body / UV Stable Polycarbonate Lens
Input Voltage	100-277VAC or 347-480VAC
Control	0-10VDC Dimming / Photocell and Motion Sensor are optional
Ingress Protection	IP65
Mounting	Interchangeable Mounting Options (shown below)
Surge Protection	10kV standard, 20kV optional
Compliance	UL / cUL
Warranty	5 Year Limited

MOUNTING OPTIONS





SPECIFICATION SUBMITTAL DETAIL

Project Name/Type:		Date:
Catalog/Part #:		

PFL G2 HIGH WATTAGE FLOODLIGHT SERIES

ORDERING INFORMATION / EXAMPLE: PFL-150W-H-40K-D-TR-BZ-G2

Product Series	Wattage	Input Voltage	CCT	CRI	Dimming	Controls Options	Mounting Options	Finish	Version
PFL	80W 100W 150W 230W 300W 400W	Blank (120-277V) Standard H (347-480VAC) (100W-400W)	30K (3000k) 40K (4000K) 50K (5000K)	Blank (80 CRI) Standard	D (0-10V Dimming) Standard	PCR-3 (3-Pin Photocell Receptacle) PCR-7 (7-Pin Photocell Receptacle) PCR-3H (3-Pin Photocell Receptacle 480V) PC-3 (3-Pin NEMA Style Photocell)* BPC (Button Photocell) JICS-BT-SC (Bluetooth Controller)	TR (Trunnion) Standard SF (Slip fitter) ARM (Arm Mount) UB (U-Bracket Mount)	BZ (Bronze) Standard CC (Custom Color) * *Special Order	G2 (Generation 2)

*PC-3 can only be used on the Slipfitter Mount

FIELD INSTALLED OPTIONS

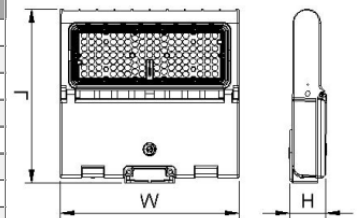
PC-3	3-Pin NEMA Style Photocell (Slip Fitter Mounting Option Only)	PFL-S150-G2	House side shield 100W and 150W (Back/Front/Left/Right)
PFL-ARM-G2	Mounting Arm for Wall or Post Mount for 100W-400W Models	PFL-S230-G2	House side shield 230W (Back/Front/Left/Right)
PFL-SF-G2	Slip Fitter Mount for 100W-400W Models (Accepts tenon up to 2 - 3/8 Inches)	PFL-S300-G2	House side shield 300W (Back/Front/Left/Right)
PFL-SF-ADP-G2	Adaptor for PFL-SF Slip Fitter	PFL-100-150W-GS	House side shield 100W and 150W
		PFL-100-230-W-GS	House side shield 230W
		PFL-100-300-W-GS	House side shield 300W

LUMEN PERFORMANCE AND ELECTRICAL DATA

Product Series	CCT	Voltage	Lumens	Efficacy	Wattage				NEMA Type	Horizontal Beam Angle (50%)	Vertical Beam Angle (50%)	Horizontal Field Angle (10%)	Vertical Field Angle (10%)	BUG Rating	Voltage (VAC)	Max Current	Power Factor	Tested Case Temperature	
PFL-80W-G2	3000K	100-277V	10,960	142.0	77.2	347-480V	13,617	133.4	102.1	7 H x 7 V	111.0	93.3	131.3	135.0	B2-U0-G2	120	1.20A	0.91	58.2C
	4000K		11,062	143.3	77.2														
	5000K		11,165	144.7	77.2														
	5700K		11,369	147.3	77.2														
PFL-100W-G2	3000K	100-277V	13,001	136.5	95.2	347-480V	13,753	134.7	102.1	6 H x 7 V	110.1	94.1	128.4	135.8	B3-U0-G2	120	1.20A	0.99	52.5C
	4000K		13,128	137.8	95.3														
	5000K		13,255	139.1	95.3														
	5700K		13,510	141.7	95.4														
PFL-150W-G2	3000K	100-277V	19,592	132.5	147.8	347-480V	20,452	135.8	150.7	7 H x 7 V	157.1	133.5	170.9	158.5	B3-U0-G3	120	0.50A	1.00	66.8C
	4000K		19,792	133.9	147.9														
	5000K		19,992	135.2	147.9														
	5700K		20,391	137.9	147.9														
PFL-230W-G2	3000K	100-277V	33,415	143.1	233.5	347-480V	31,669	142.1	222.9	7 H x 7 V	149.5	116.7	166.5	151.9	B4-U0-G4	120	1.88A	1.00	78.0C
	4000K		33,728	144.4	233.5														
	5000K		34,040	145.8	233.5														
	5700K		34,664	148.4	233.5														
PFL-300W-G2	3000K	100-277V	41,320	142.6	289.8	347-480V	40,193	142.2	282.7	7 H x 7 V	155.5	125.4	169.7	157.2	B4-U0-G4	120	2.54A	1.00	68.6C
	4000K		41,709	143.9	289.8														
	5000K		42,098	145.3	289.8														
	5700K		42,876	147.9	289.8														
PFL-400W-G2	3000K	100-277V	57,334	144.6	396.5	347-480V	57,160	147.8	386.7	7 H x 7 V	149.7	116.7	166.7	152.3	B5-U0-G5	120	3.37A	1.00	62.7C
	4000K		57,854	145.9	396.5														
	5000K		58,373	147.2	396.5														
	5700K		59,411	149.8	396.6														

LUMINAIRE MECHANICAL DETAILS

Specification	PFL-80W-G2	PFL-100-G2	PFL-150-G2	PFL-230-G2	PFL-300-G2	PFL-400-G2
Ingress Protection	IP-65					
Construction	Cast Aluminum Alloy / Epoxy Powder Coat Finish / Polycarbonate Lens					
Mounting	Adjustable Trunnion (Standard) / Adjustable Slip Fit / Fixed Tenon (Optional)					
EPA - Single Mount	1.020 Sq. Ft.	0.311 Sq. Ft.	0.311 Sq. Ft.	0.402 Sq. Ft.	0.524 Sq. Ft.	0.478 Sq. Ft.
EPA - 2@180 Deg.	2.050 Sq. Ft.	0.623 Sq. Ft.	0.623 Sq. Ft.	0.804 Sq. Ft.	1.040 Sq. Ft.	0.881 Sq. Ft.
Weight	9.3	9.3	9.3	10.6	15.0	18.7
CBM	0.017	0.017	0.017	0.020	0.024	0.029
Dimensions (LxWxH)	12.3" x 12.6" x 2.6"	12.3" x 12.6" x 2.6"	12.3" x 12.6" x 2.6"	14.8" x 12.6" x 2.6"	17.93" x 12.6" x 2.86"	22.8" x 12.6" x 2.8"



Miami, FL USA - info@jademar.com
T: 305.640.0465 - F: 305.640.0468
WWW.JADEMAR.COM



Information contained herein is subject to change without notice.
Values are nominal.
Revised 08/2022